

<b>Committee(s):</b> Health and Social Care Scrutiny Committee	<b>Dated:</b> 10/02/2021
<b>Subject:</b> WEL Estates Update to CoL - Tower Hamlets Goodman's Fields Health Centre Project Update	<b>Public</b>
Which outcomes in the City Corporation's Corporate Plan does this proposal aim to impact directly?	N/A
Does this proposal require extra revenue and/or capital spending?	N/A
If so, how much?	N/A
What is the source of Funding?	N/A
Has this Funding Source been agreed with the Chamberlain's Department?	N/A
<b>Report of:</b> Jack Dunmore, Strategic Estates Manager WEL CCG	<b>For Information</b>

### Summary

This paper updates the Health and Social Care Scrutiny Committee on GP services in Tower Hamlets. Approximately 16% of City of London residents are registered with GP practices in Tower Hamlets at two main practices (Spitalfields and Whitechapel Health Centre, who also have the satellite practice at Portsoken). The paper provides an update for Members on the development of the new Goodman's Fields Health Centre which will house the Whitechapel Health Centre and the services that had been provided at the Portsoken Satellite Surgery.

### Recommendation(s)

Members are asked to note the report.

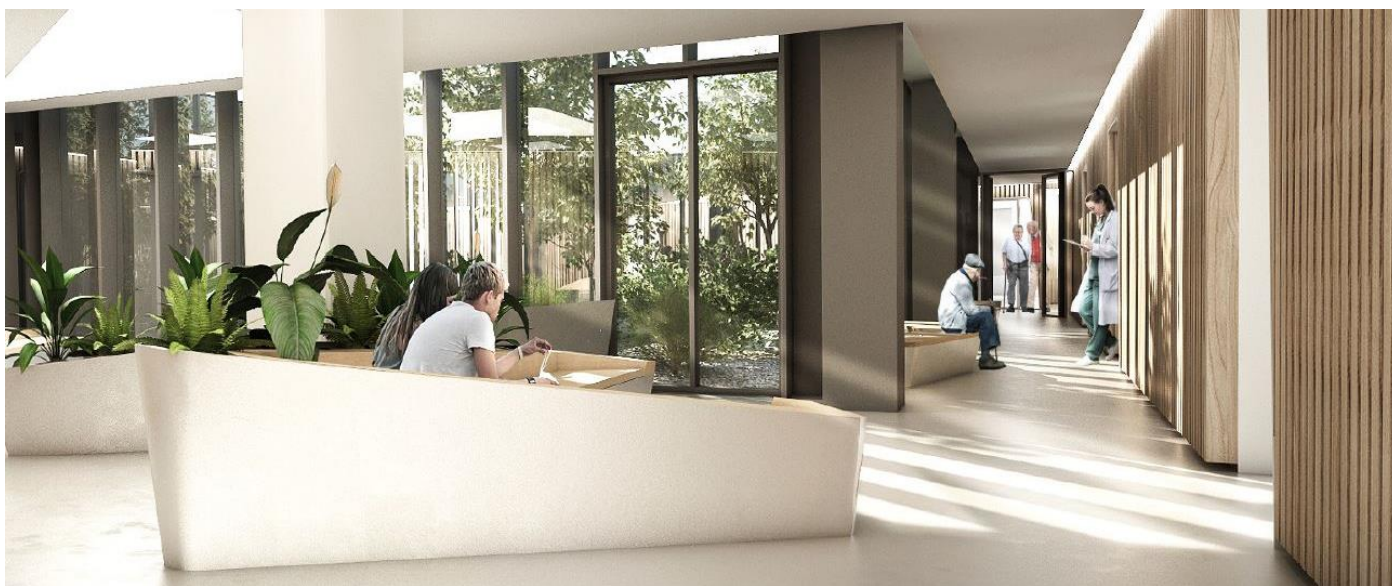
### Main Report

#### Tower Hamlets Estates Update

##### 1.0 Project overview

- In 2018, Tower Hamlets CCG set out on a new health centre project; the new home for patients in Tower Hamlets & the City of London.

- The CCG instructed NHS Property Services to secure the lease for the new property and be the construction & procurement lead for the health centre.
- For the City of London (CoL), Goodman's Fields Health Centre provides the new permanent home for Portsoken.
- Goodman's Fields Health Centre will be operated by AT Medics, the current provider of care for patients from Portsoken.
- Appendix 1 illustrates the move from Portsoken to the new home at Goodman's Fields Health Centre.
- AECOM and the CCG were invited to showcase the centre & project at the European Healthcare Design Conference 2020 - Population health in practice, reshaping primary care.



## 2.0 Project on-site

Project	Construction commencement date	Anticipated construction completion date	Anticipated practice opening
<i>Goodman's Fields</i>	August 2020 (award of contract 6 <sup>th</sup> July 2020)	June 2021	August - September 2021*

\*forecast practice opening subject to change



## 3.0 The Design

## Appendix 2 – General arrangement of the new health centre.

The design of the health centre is centred around Biophilic design principles; Biophilic design is an approach to architecture that seeks to connect building occupants more closely to nature.

The approach centres the building around available natural light and a landscaped central courtyard garden, connecting building users and patients to nature; the design has been worked through with both patients and practice staff.

The new home for patients incorporates:

- 23 clinical spaces – including dedicated Phlebotomy & Point of Care testing suite,
- Two patient lounges – a different way to think about patient waiting, forming two public zones on either side of the central courtyard, providing seating, patient information and flexible furniture enabling the spaces to be used for various uses, incl. Pilates / Yoga,
- A large open plan office environment to staff to provide flexible accommodation for all functions of patient care. This can include, practice support staff, digital & remote patient care and space for clinical staff to come out of clinical rooms (when not seeing patients) and work in a sociable office environment.

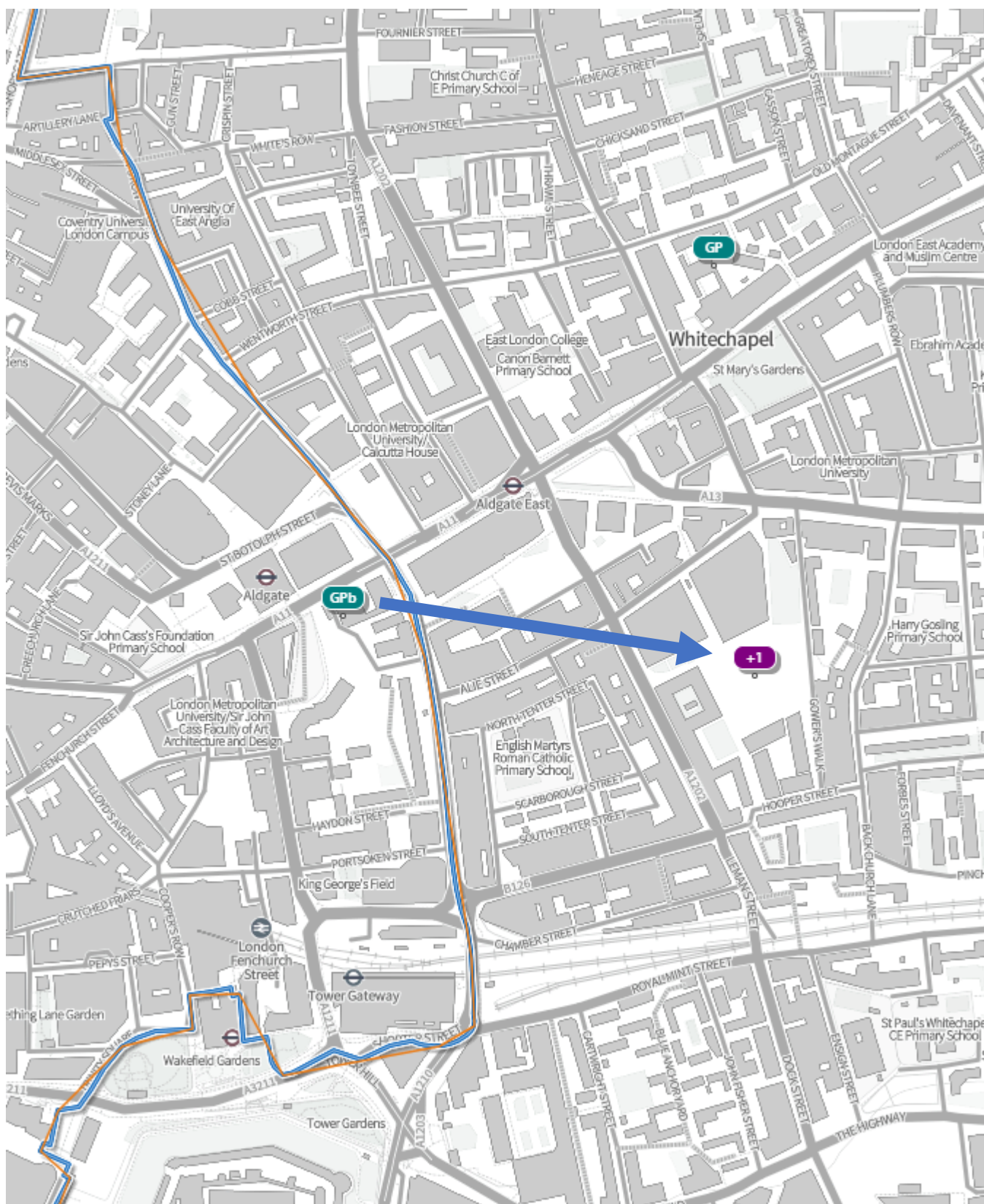
### 4.0 The Move

The CCG is currently working with AT Medics to work through the safest and best way for patients to start occupying the new health centre. There are existing premises in both CoL and Tower Hamlets moving into the new home.

AT Medics run two neighbouring Practices in Tower Hamlets - East One Health and Whitechapel Health (of which Portsoken is a branch). These two Practices will be merging in early summer and will move into Goodman's Fields as a single Practice.

In March 2019, as part of the Primary Care re-procurement of both Practice contracts, patient consultation took place about the proposed move. The CCG and the Practice will continue to engage with patients and stakeholders over the spring/summer with updated information and further detail on the process of the move. This engagement will include letters, meetings with the Practice Patient Participation Group and opportunities to attend drop in sessions. The CCG will be working closely with Healthwatch City of London and Tower Hamlets to support the patient engagement.

## Appendix 1



GPb – Current Location of Portsoken

+1 – Goodman's Fields Health Centre

GP – Spitalfields Health Centre



## Appendix 2

